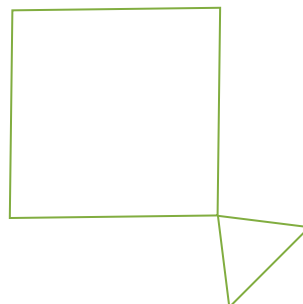
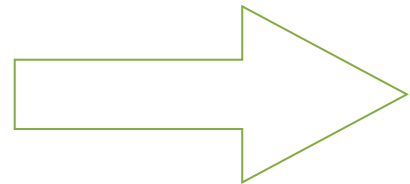
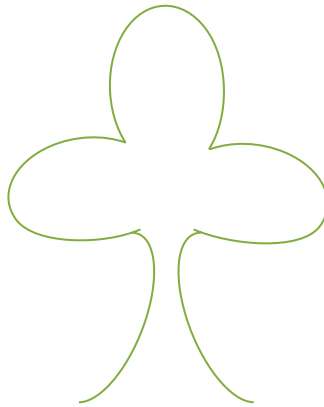
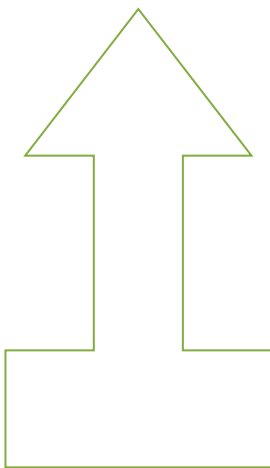
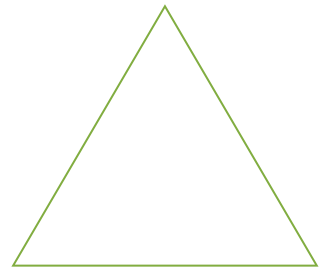
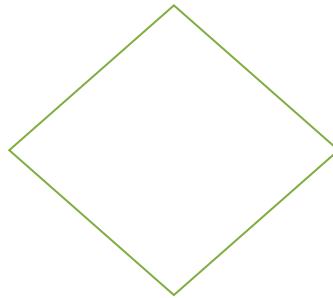
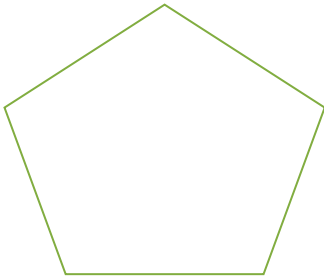
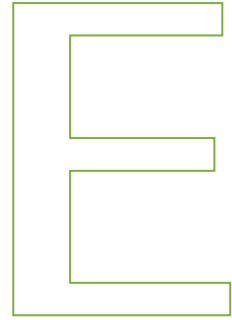
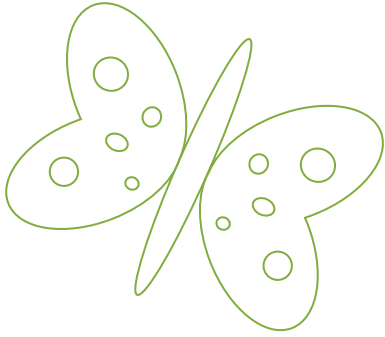
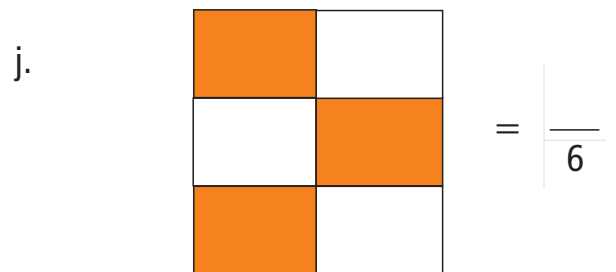
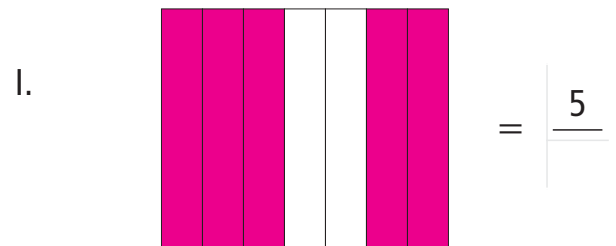
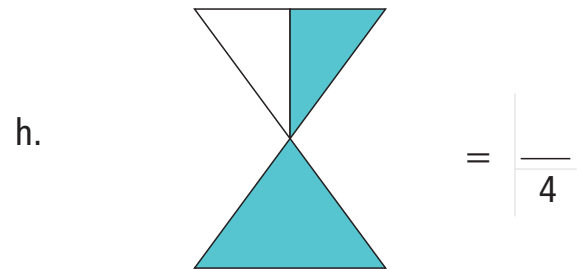
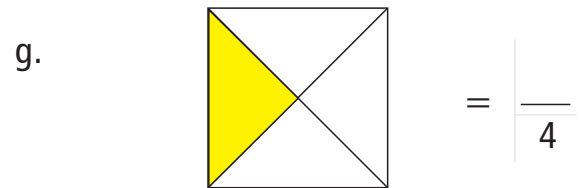
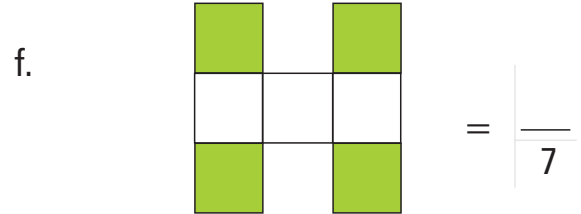
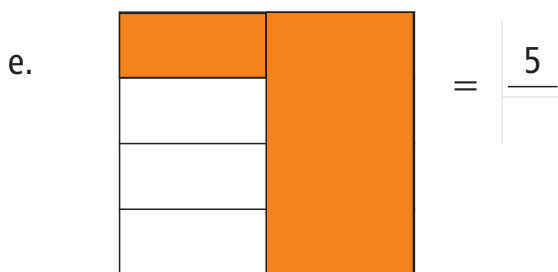
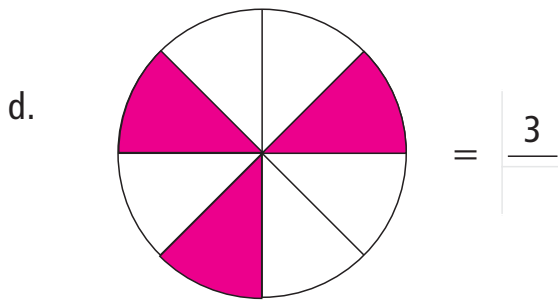
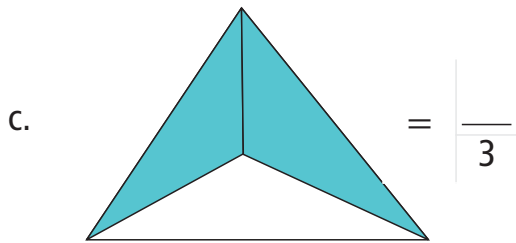
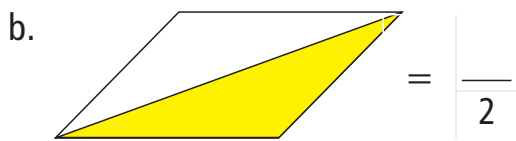
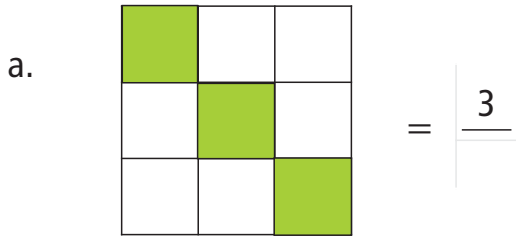


D. Draw the line of symmetry for the given objects.



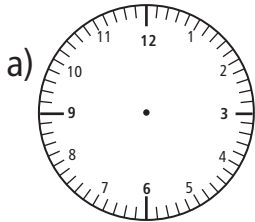
D. Fill the numerator and denominator to show fractions of shaded area.



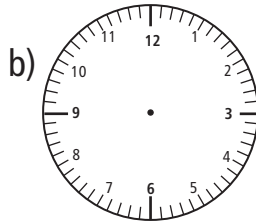


**Section – 2**

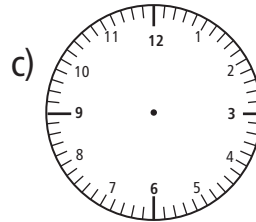
A. Draw the hands of the clocks to show the given time.



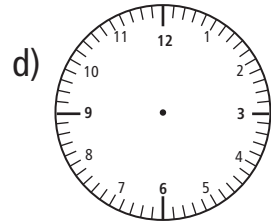
6:43



9:12



8:18



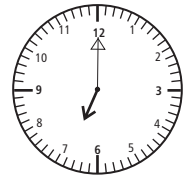
6:27

Time in a.m. and p.m.

We know that the time from one midnight to the next midnight is called a day. The hour hand takes two rounds of the dial in a day. It takes 12 hours to complete one round and hence 24 hours to complete two rounds.

∴ 1 day = 24 hours

So, it is clear that the hour hand shows the same time twice in a day.

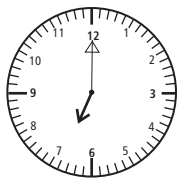


This clock on the right shows 7 o'clock. It may be morning or evening. To overcome this problem, the 24 hours of the day have been divided into two categories.

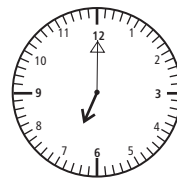
- From 12 midnight to 12 noon
- From 12 noon to 12 midnight

We use the letter a.m. to show the time from 12 midnight to 12 noon. It stands for ante meridiem.

We use the letters p.m. to show the time from 12 noon to 12 midnight. It stands for post meridiem.



7:00 in the morning is written as 7 a.m.

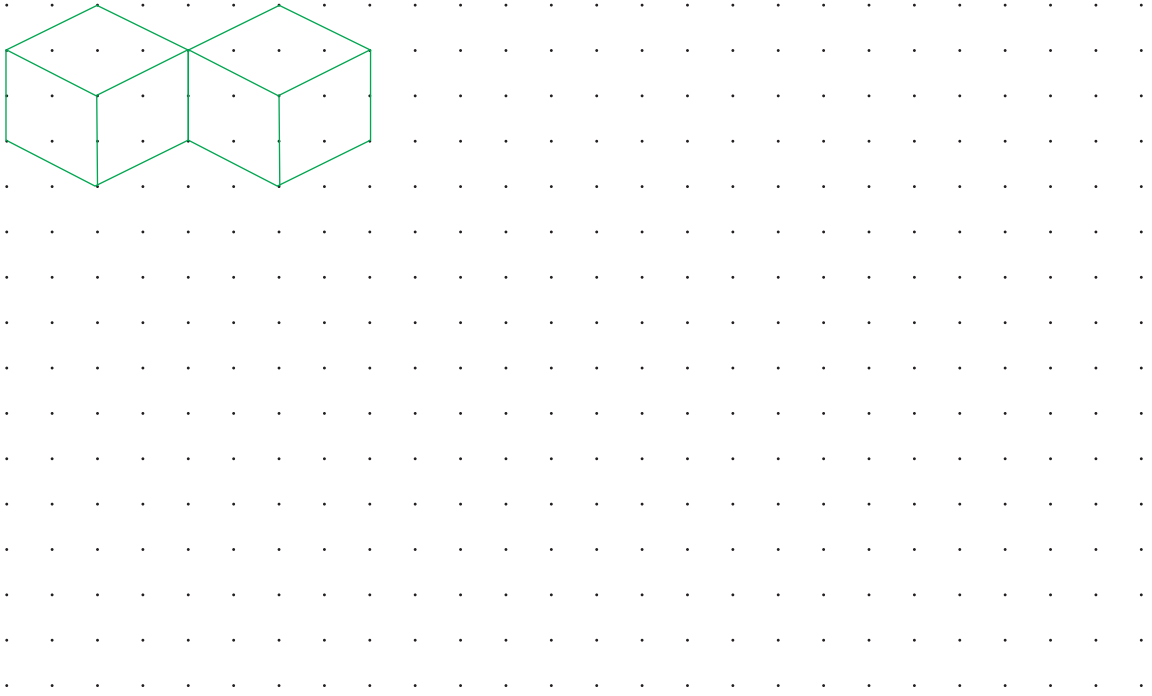
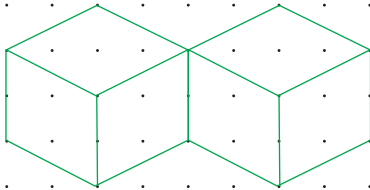
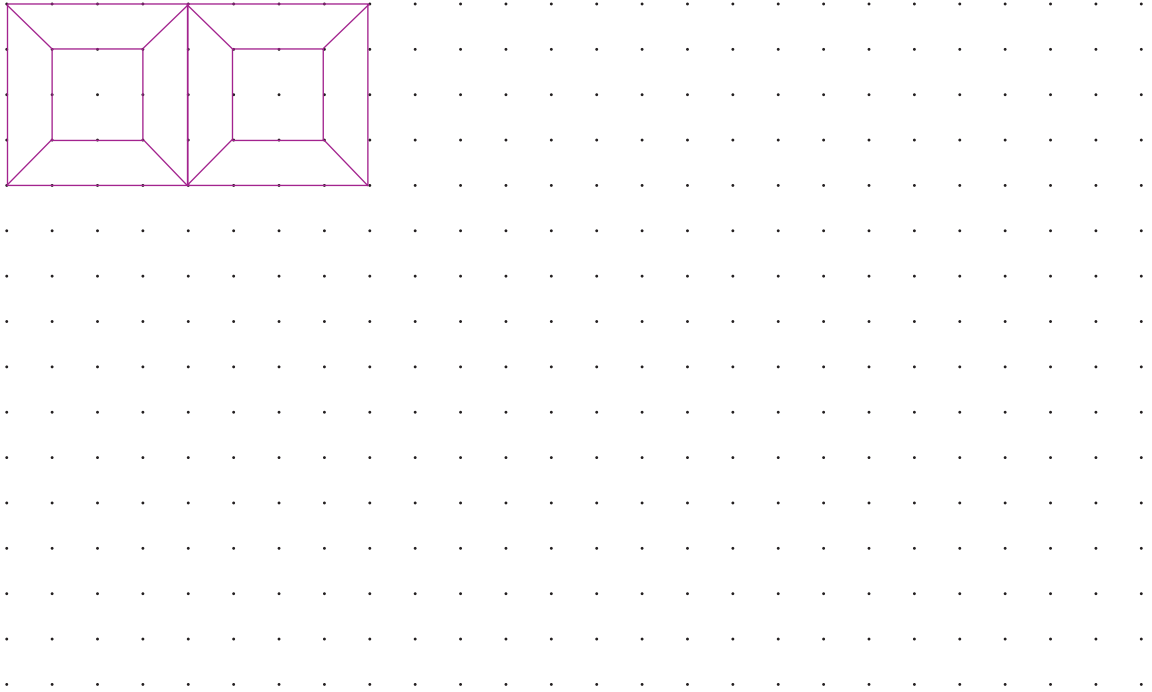
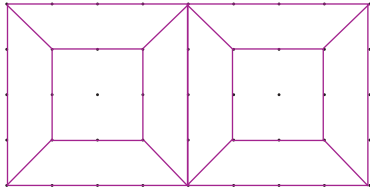


7:00 in the evening is written as 7 p.m.

B. Write the time using a.m. or p.m.

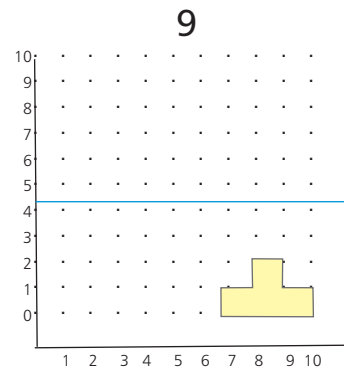
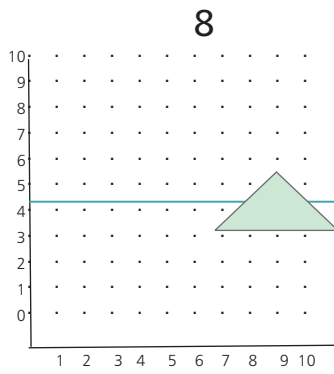
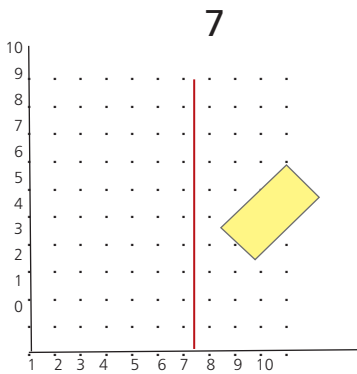
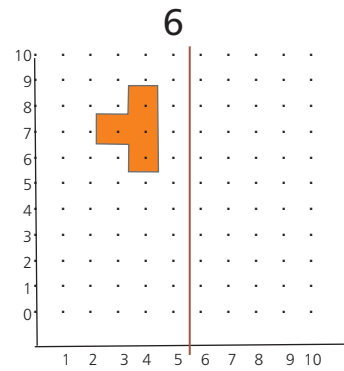
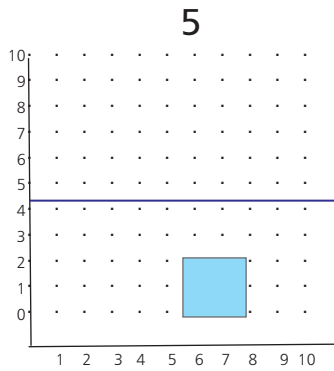
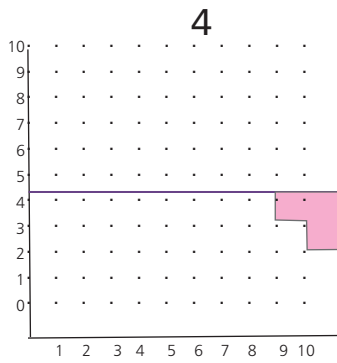
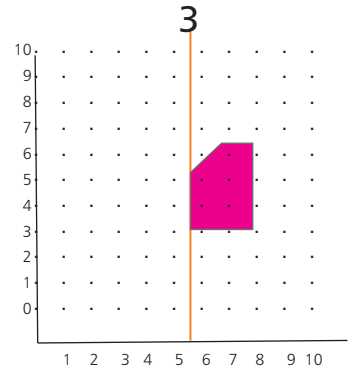
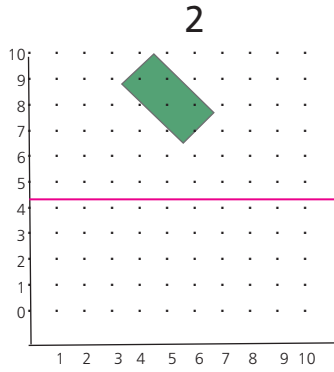
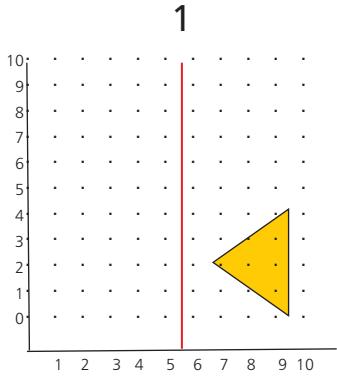
- a) 5:35 in the morning \_\_\_\_\_
- b) 2:30 in the afternoon \_\_\_\_\_
- c) 3:40 in the morning \_\_\_\_\_

B. Complete the tiling pattern.



**Section – 2**

A. Reflect the images given below :-



Is there change in position of the images ? .....

Is there change in direction of the images ? .....